
TECHNICAL MANUAL

Technical Requirements for Dynamics® NAV 2009

Date: June 2011



Contents

- 1 Introduction.....1
- 2 The 3-Tier Architecture.....2
- 3 The Role Tailored Client.....7
- 4 The Classic Client.....8
- 5 Microsoft Dynamics NAV Server9
- 6 Database Server10
- 7 Application Server11

1 Introduction


1.1 This Manual

This manual is designed to take you through the technical requirements for an installation of NAV 2009.

Please direct any questions or correspondence relating to this document to:

 **Support**

Metaphorix Limited
3 Temple Court
Temple Way
Coleshill
BIRMINGHAM
B46 1HH

 01675 432400 (office)
01675 465571 (fax)

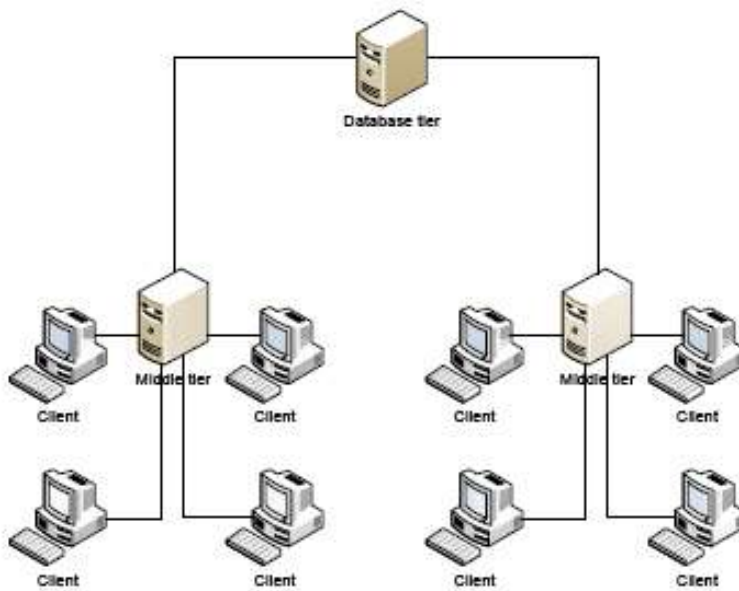
Email: support@metaphorix.co.uk

2 The 3-Tier Architecture

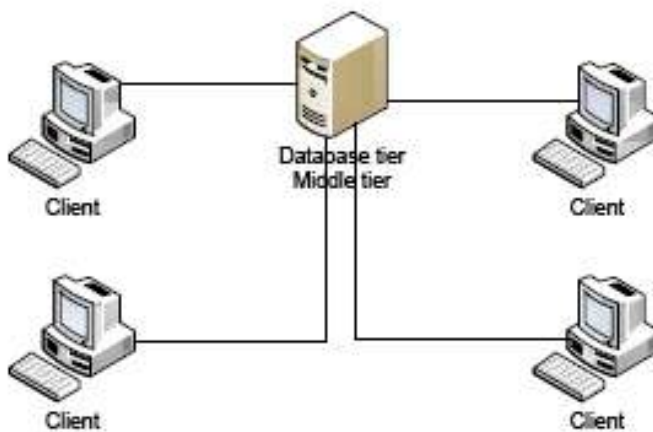
The NAV 2009 software allows users to take advantage of a feature that spreads the load on the server or servers in use.

The 3-tier architecture involves:

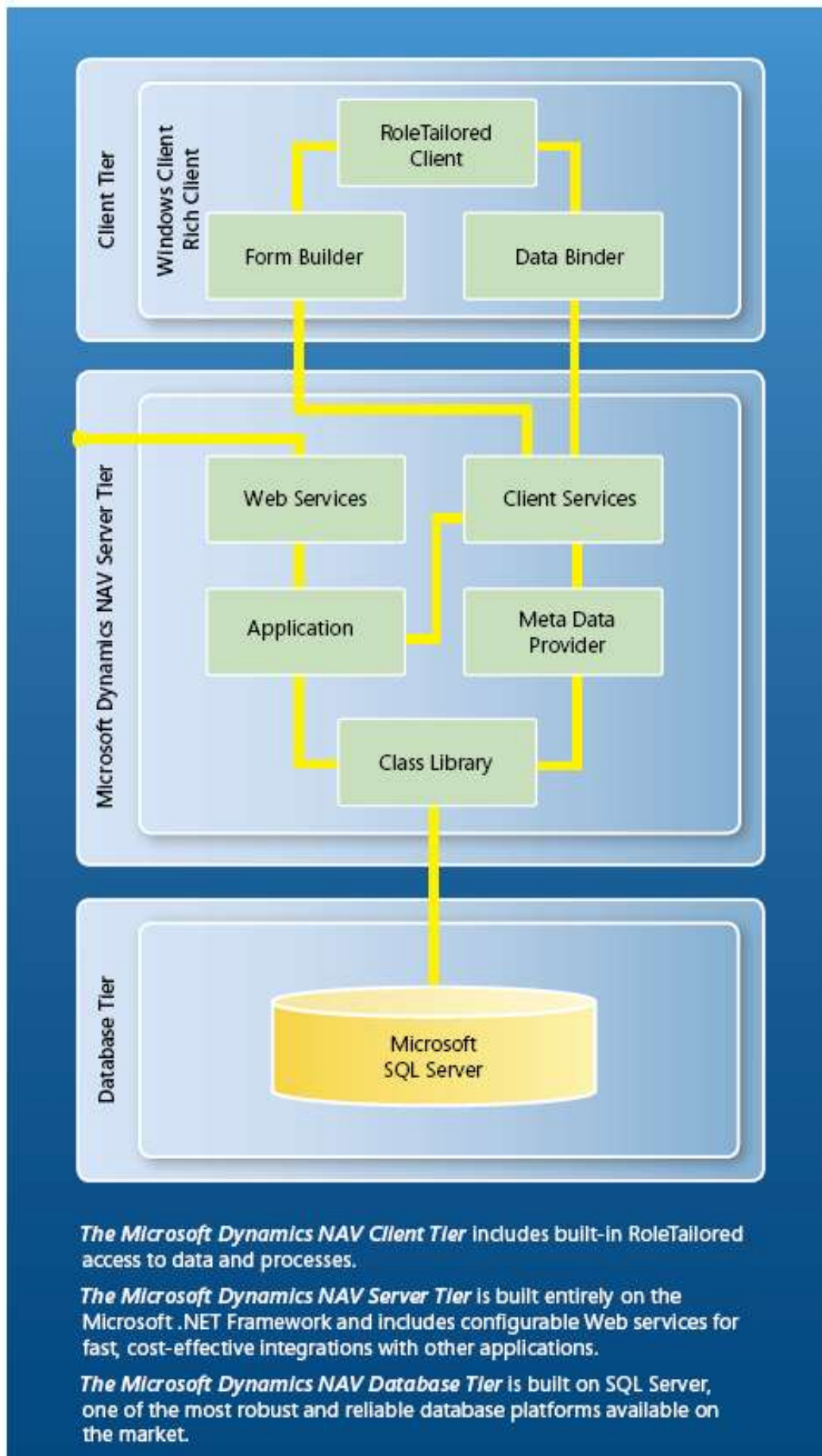
- the desktop client PC or laptop (for user interface)
- the database server (for the data in NAV)
- the application server or middle tier (for the NAV programs)



The 3-tier architecture



The 2-tier architecture



In terms of whether or not you need to go this route to offer the right level of response time, there are a number of considerations.

Number of Users

As a rule of thumb, the applications and the database can co-exist on the same server where the number of users is less than 20.

Memory

A server with a minimum of 8GB of memory is required to drive both the applications and the database on the same server. Ideally, you would opt for more to make sure as this is probably the most important factor in determining the responses you will receive.

Power and Number of CPUs

If you opt for a server with multiple CPUs this will help to improve the responses, as will a very powerful CPU.

Complexity of Installation

Where the system being installed has more complex NAV software involved, there is a bigger burden on the server. This means that installations with manufacturing control or service management may require more memory at the very least, and potentially the use of the 3-tier architecture with a separate application and database server.

We are happy to offer advice and guidance on what you need to buy in terms of hardware should you be unsure.

2.1 The Role Tailored Client

What is The Role Tailored Client?

The Role Tailored Client (RTC) is a breakthrough in business productivity designed specifically to help people interact with their business systems more efficiently and effectively. The revolutionary new Role Tailored interface makes it possible for you to offer employees an appealing, customisable and easy-to-navigate window into their work world.

Why a Role Tailored Client?

Microsoft is continually investing in extensive user experience research and to date it has revealed some trends that have led to some specific goals when designing the end user experience:

- People want less complexity in their ERP (Role Tailored Client)
- They would like to get a quick overview of 'my business' (Role Centres)
- They want to communicate with their colleagues easily about the data (Microsoft Outlook integration)
- They want items that need their input to be pushed to them (Easy collaboration)

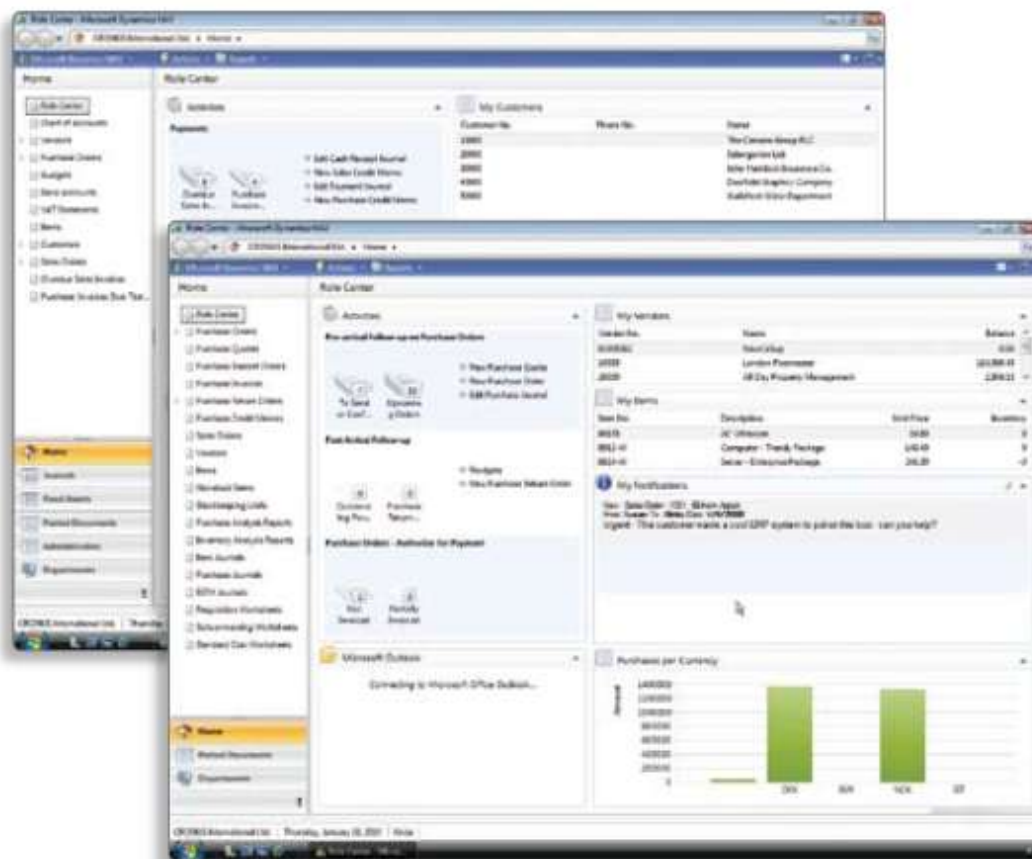
- They want it to be easy to learn and like their other applications (with a familiar interface like Office)

What is a Role Centre?

The Role Centre is the user interface in Microsoft Dynamics NAV 2009 and is like a homepage to the system. It displays the specific tasks, activities and information that each role needs to do their job, providing them with an overview of what they've done and what is next. It enables them to focus on their tasks and organise their time.

The employees simply log into their Role Centre to their own user profile and personal place in your business management system.

One of the key advantages of Role Centre is that it's so easy to personalise. Parts can be added, removed or customised by users to show the information or view that suits individual needs - without the aid of a programmer.



2.2 SQL Server

SQL Server is a prerequisite for the management of the database with NAV 2009.

The purchase of SQL could involve you buying a copy of SQL server outright, or you could buy run time licences.

SQL Server Licences

This involves buying the right to use SQL Server and then enough CALs to run the users you have on board with NAV.

The drawback of this is the cost. The SQL Server software is more expensive, depending on number of CPUs, but CALs are less expensive than Run Times (see below).

The benefit is that this allows you to operate multiple SQL databases, where you want to use SQL for other things as well as NAV.

Rather than buying SQL Server you can have it gifted to you as part of the purchase of the Microsoft Small Business Server licence that you will need to install to run the server.

The Microsoft Windows Small Business Server Premium edition is the one that offers free SQL.

SQL Run Time Licences

This approach allows you to buy single run time licences for each user you have in use with NAV.

The drawback is that this only allows the use of NAV with SQL and nothing else.

The cost of a Run Time licence is £82 each.

3 The Role Tailored Client

3.1 Operating System on PCs/Laptops

Windows XP Professional SP3 or later (32 bit or 64 bit)
Windows Vista (Business, Enterprise, or Ultimate) SP1 or later (32 bit or 64 bit)
Windows Server 2003 SP2 or later (32 bit or 64 bit)
Windows Server 2003 R2 SP2 or later (32 bit or 64 bit)
Windows Server 2008 (32 bit or 64 bit)

3.2 Hardware Resources on PCs/Laptops

Hard Disk Space	Minimum 30MB
Memory	Minimum 1GB
CPU	See operating system requirements.

3.3 Other Applications

Microsoft Internet Explorer 6.0 or later
Microsoft .NET Framework 3.5
Active Directory required for 3-tier configurations.
For instant messaging and TAPI Microsoft Office Communicator 2007 is required.
Microsoft Office 2003 SP3 or 2007 SP1 or 2010 is required for: <ul style="list-style-type: none"> • Mail Merge • Outlook Client Integration • Import and Export Budget to and from Microsoft Excel • Office XML • Share Point Please note that Mail Merge requires Collaboration Data Object (CDO) to be installed.

4 The Classic Client

4.1 Operating System on PCs/Laptops

Windows XP Professional SP3 or later (32 bit or 64 bit)
Windows Vista (Business, Enterprise, or Ultimate) SP1 or later (32 bit or 64 bit)
Windows Server 2003 SP2 or later (32 bit or 64 bit)
Windows Server 2003 R2 SP2 or later (32 bit or 64 bit)
Windows Server 2008 (32 bit or 64 bit)

4.2 Hardware Resources on PCs/Laptops

Hard Disk Space	Minimum 250MB (full installation), 110MB (minimal installation)
Memory	Minimum 1GB
CPU	See operating system requirements.

4.3 Other Applications

Microsoft .NET Framework 3.5
<p>Microsoft Office 2003 SP3 or 2007 SP1 or 2010 is required for:</p> <ul style="list-style-type: none"> • Mail Merge • Outlook Client Integration • Import and Export Budget to and from Microsoft Excel • Office XML • Share Point <p>Please note that Mail Merge requires Collaboration Data Object (CDO) to be installed.</p>
For single-user installation Microsoft SQL Server 2005 Express or SQL Server 2008 Express
<p>For developing reports for the Role Tailored client, one of the following products is required:</p> <ul style="list-style-type: none"> • Microsoft Visual Web Developer 2005 Express edition SP1 or above* • Microsoft Visual Studio 2005 Standard / Professional SP1 or above • Microsoft Visual Studio 2008 Standard / Professional SP1 or above <p>If Microsoft Visual Web Developer 2005 Express edition is used, Reporting Add-In for Microsoft Visual Web Developer 2005 Express is also required.</p>
For debugging applications running on the Microsoft Dynamics NAV Server, Microsoft Visual Studio 2008 SP1 is required.

5 Microsoft Dynamics NAV Server

5.1 Operating System

Windows Server 2003 SP2 or later (32 bit or 64 bit)
Windows Server 2003 R2 SP2 or later (32 bit or 64 bit)
Windows Small Business Server 2003 R2 SP2 or later (32 bit or 64 bit)
Windows Server 2008 (32 bit or 64 bit)
Windows Small Business Server 2008 (32 bit or 64 bit)
Windows Essential Business Server 2008 Standard or Premium (32 bit or 64 bit)

5.2 Hardware Resources

Hard Disk Space	Minimum 500MB
Memory	Minimum 1GB
CPU	See operating system requirements.
Network	WinSockets-compatible TCP/IP (if you are using the TCP protocol with the Microsoft Dynamics NAV Server). LAN network connection should be 100 megabits per second or better.

5.3 Other Applications

Microsoft .NET Framework 3.5
Active Directory required for 3-tier configurations.

6 Database Server

6.1 Operating System

Windows Server 2003 SP2 or later (32 bit or 64 bit)
Windows Server 2003 R2 SP2 or later (32 bit or 64 bit)
Windows Small Business Server 2003 R2 SP2 or later (32 bit or 64 bit)
Windows Server 2008 (32 bit or 64 bit)
Windows Small Business Server 2008 (32 bit or 64 bit)
Microsoft SQL Server 2005 SP2 Express, Workgroup, Standard, Enterprise
Microsoft SQL Server 2008 Express, Workgroup, Standard, Enterprise
Windows Essential Business Server 2008 Standard or Premium (32 bit or 64 bit)

6.2 Hardware Resources

Hard Disk Space	<p>Minimum 500MB Space for database. Temporary space equivalent to the size of the largest primary index.</p>
Memory	Minimum 1GB
CPU	The server can only use 1 CPU.
Network	<p>WinSockets-compatible TCP/IP (if you are using the TCP protocol with the Microsoft Dynamics NAV Server).</p> <p>NetBIOS-compatible LAN (if you are using the netb protocol with the Microsoft Dynamics NAV Server)</p> <p>LAN network connection should be 100 mbit/sec or better</p> <p>Note: Maximum Database size is 132 GB, when database is Classic.</p>

6.3 Other Applications

Microsoft SQL Server 2005 SP2 Express, Workgroup, Standard, Enterprise
Microsoft SQL Server 2008 Express, Workgroup, Standard, Enterprise
Microsoft SQL Server Run Time Licence plus CALs for each user (NAV use only)

7 Application Server

7.1 Operating System

Windows Server 2003 SP2 or later (32 bit or 64 bit)
Windows Server 2003 R2 SP2 or later (32 bit or 64 bit)
Windows Small Business Server 2003 R2 SP2 or later (32 bit or 64 bit)
Windows Server 2008 (32 bit or 64 bit)
Windows Small Business Server 2008 (32 bit or 64 bit)
Windows Essential Business Server 2008 Standard or Premium (32 bit or 64 bit)

7.2 Hardware Resources

Hard Disk Space	Minimum 250MB
Memory	Minimum 35MB free
CPU	The server can only use 1 CPU.
Network	WinSockets-compatible TCP/IP (if you are using the TCP protocol with the Microsoft Dynamics NAV Server). NetBIOS-compatible LAN (if you are using the netb protocol with the Microsoft Dynamics NAV Server) LAN network connection should be 100 mbit/sec or better